



M7

RIGHT-HAND DRIVE
SOLAR ELECTRIC CAR



SUNLIGHT IS THE POWER SOURCE

WE REDEFINE NEW ENERGY VEHICLES

15 KW

PEAK POWER

23 kWh

BATTERY

100 KW/h

MAX. SPEED

400 KM

MAX. RANGE



INTELLIGENT CONTROL

- MFL - MULTIFUNCTION STEERING WHEEL
- PKE - KEYLESS ENTRY SYSTEM



MUSIC



TOUCH SCREEN



BUTTON START



RADIO



REAR VIEW CAMERA



AUX



VIDEO



BLUETOOTH



USB



COMPATIBLE WITH THREE POWER MODES

SOLVE CHARGING ANXIETY AND RANGE ANXIETY FOR YOU



SOLAR POWER SYSTEM



COMMERCIAL POWER



RANGE EXTENDER



600KM

BECAUSE OF POWER SAVING THE DRIVING RANGE IS LONGER

ECO ENERGY-SAVING DRIVING MODE IS STANDARD FOR ALL MODELS



DUAL SPEED TRANSMISSION TECHNOLOGY

AUTOMATIC SWITCHING OF HIGH AND LOW SPEED POWER OUTPUT MODE TO ADAPT TO DIFFERENT ROAD CONDITIONS



POWERFUL



STABILIZE

FOUR POWER SYSTEM IS GUARANTEED FOR 3 YEARS OR 50000 KM

FOUR ELECTRIC SYSTEMS: MOTOR, ELECTRIC CONTROL, BATTERY AND SOLAR ENERGY

60°C

HIGH TEMPERATURE ENVIRONMENT

-30°C

LOW TEMPERATURE ENVIRONMENT

IP 67

HUMID ENVIRONMENT





SUFFICIENT LIGHT FOR 6-8 HOURS

2-3 KWH

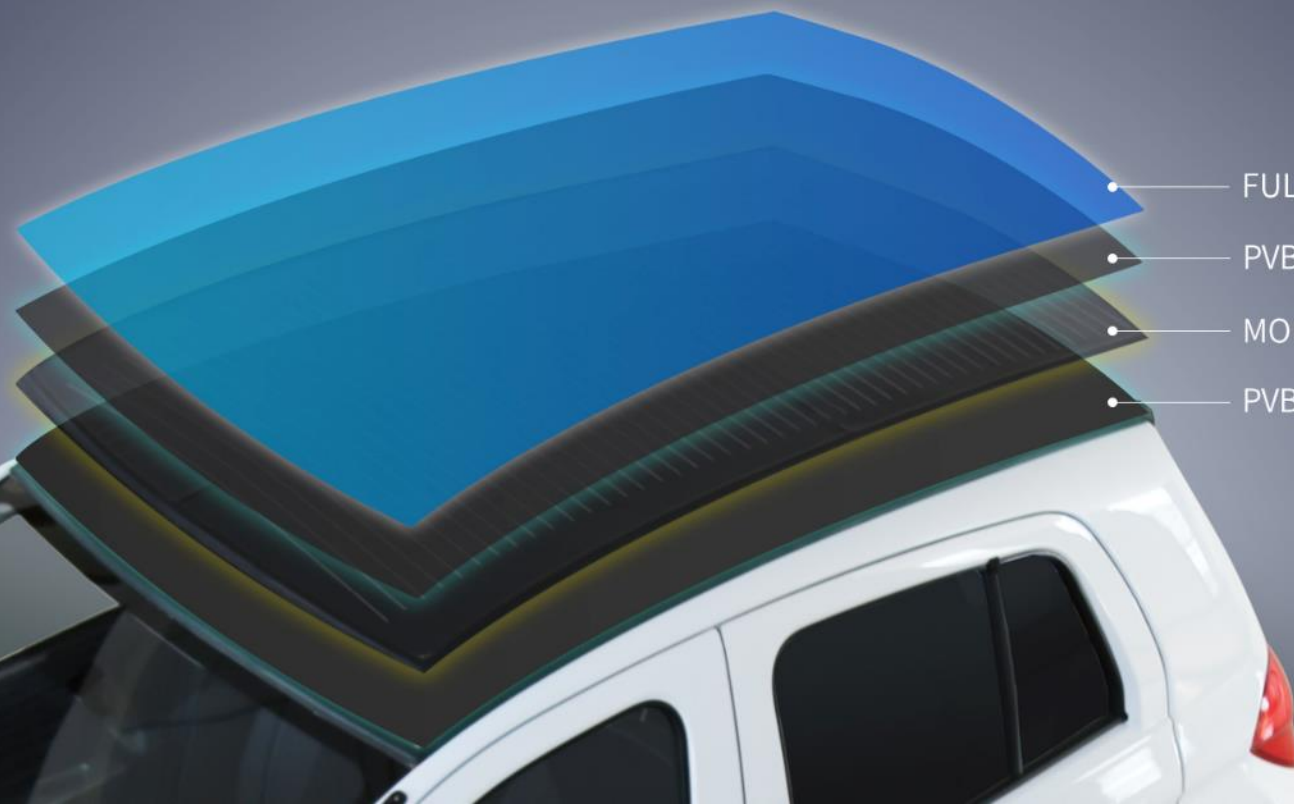
AVERAGE DAILY POWER GENERATION

35-50 KM

INCREASE DRIVING RANGE

12000⁺ KM

ANNUAL DRIVING RANGE INCREASE



FULL ROOF CURVED GLASS

PVB

MONOCRYSTALLINE SILICON SOLAR CELLS

PVB

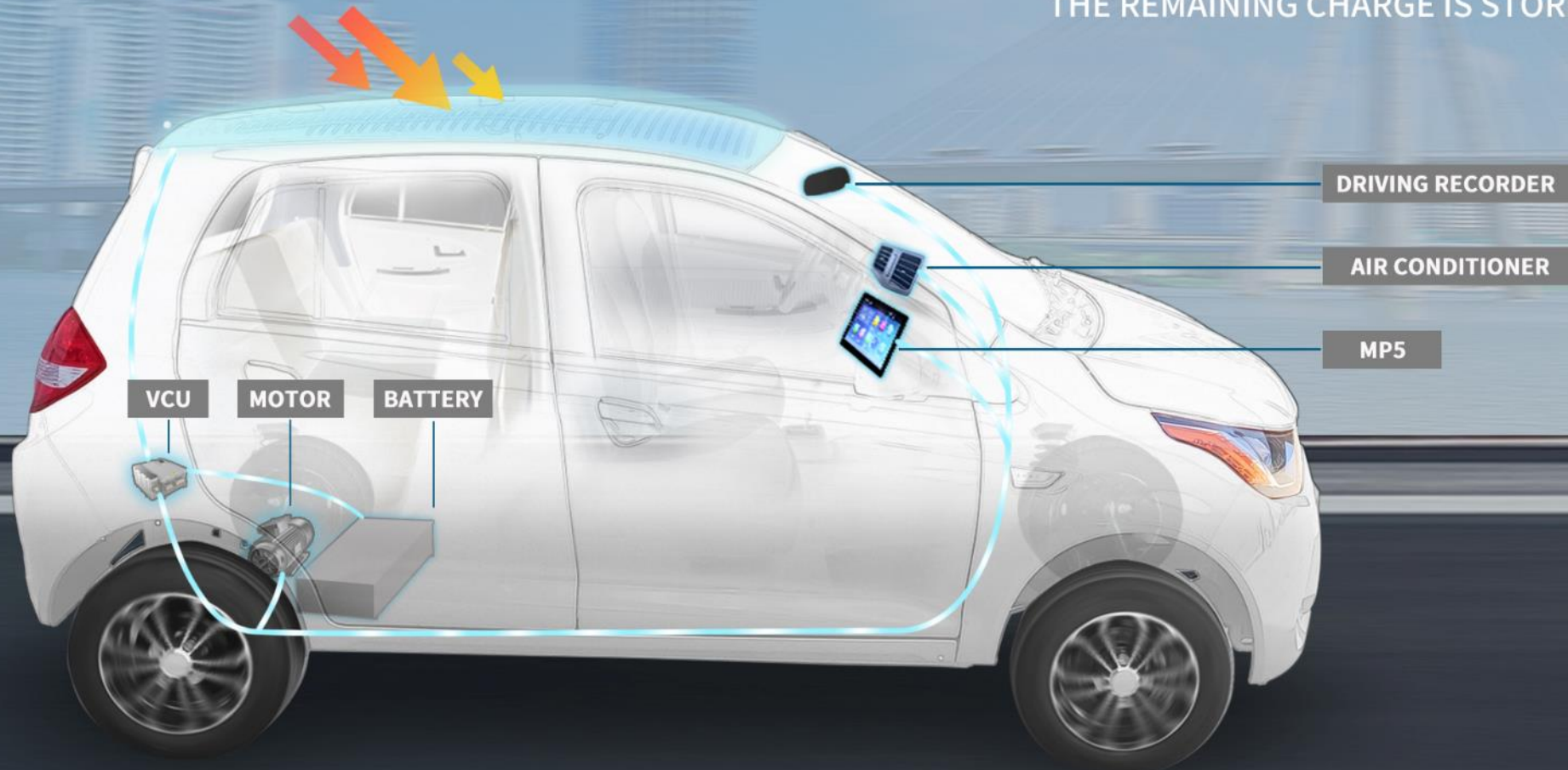
PHOTOELECTRIC COMPLEMENTARY CHARGING MODE

WHEN THE VEHICLE IS CHARGING OUTDOORS,
THE ON-BOARD SMC POWER MANAGEMENT SYSTEM AND THE ROOF SOLAR SYSTEM CHARGE THE VEHICLE AT THE SAME TIME,
THE TWO DO NOT AFFECT EACH OTHER UNTIL THEY ARE FULLY CHARGED AND AUTOMATICALLY CUT OFF CHARGING.



INTELLIGENT POWER SUPPLY MODE

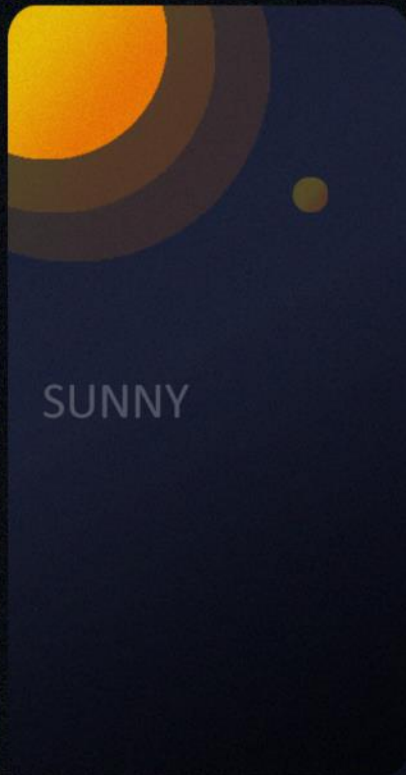
WHEN THE VEHICLE IS RUNNING, THE ROOF SOLAR SYSTEM CONTINUOUSLY CHARGES THE VEHICLE
GIVE PRIORITY TO POWER SUPPLY TO AIR CONDITIONING, MOTOR, ON-BOARD MULTIMEDIA AND OTHER UNITS
THE REMAINING CHARGE IS STORED IN THE BATTERY

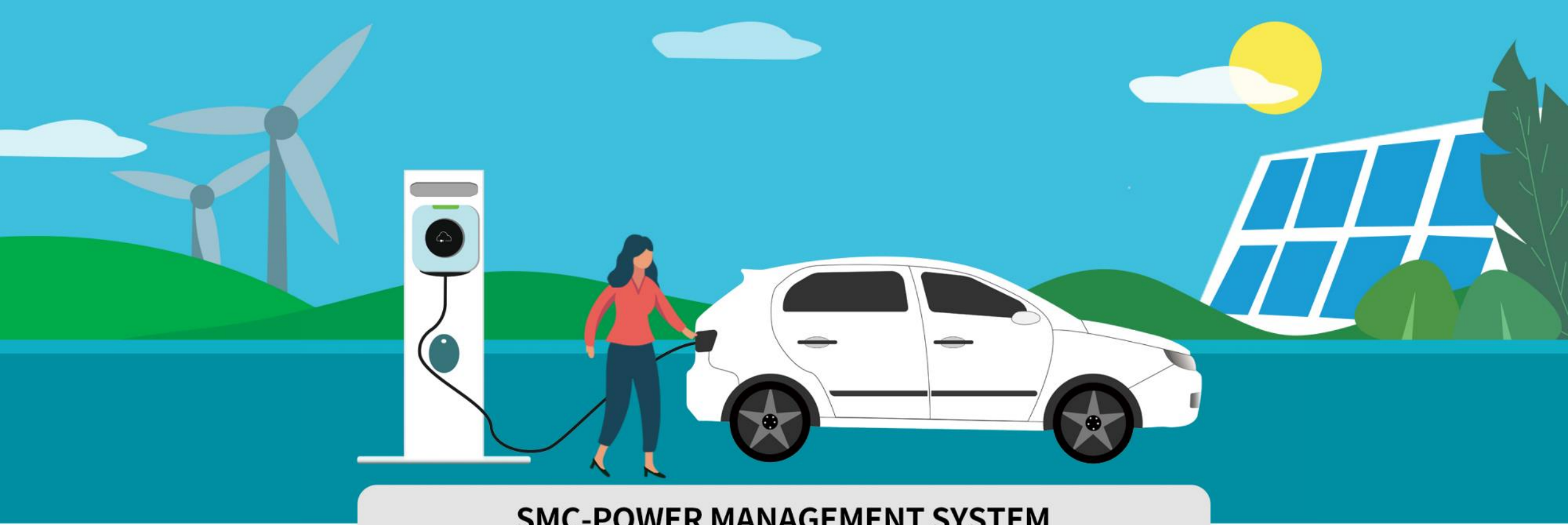


LOW LIGHT POWER GENERATION MODE

USING THE PATENTED TECHNOLOGY INDEPENDENTLY DEVELOPED,
THE PHOTOELECTRIC CONVERSION SYSTEM CAN BE STARTED EVEN IN THE WEATHER WITH POOR LIGHTING CONDITIONS,
SO AS TO REALIZE THE REAL MEANING OF "POWER GENERATION AS LONG AS THERE IS LIGHT"

*** IN LOW LIGHT WEATHER, THE VEHICLE CAN STILL PROVIDE A RANGE OF 200-400 KM**





SMC-POWER MANAGEMENT SYSTEM
90-265 VOLTAGE RANGE (50/60HZ)

COMPATIBLE WITH MOST OF THE WORLD'S ELECTRICITY INPUT VOLTAGE , THERE IS NO NEED TO PURCHASE ADDITIONAL CONVERTERS .
PLUG AND PLAY .ACCORDING TO THE EXPORT COUNTRIES , ADAPT DIFFERENT STANDARDS OF POWER PLUG



INTELLIGENT PROTECTION SYSTEM



Undervoltage protection

Short circuit protection

Overvoltage protection

undercurrent protection

Overcurrent protection

Overheat protection

Buzzer alarm

Full power protection



Fine star





Fine star





Fine star





Fine star





Fine star





Fine star





Fine star





Fine star







Fine star





Fine star





HEADLAMP GROUP

- A** CLEARANCE LAMP & TURN SIGNAL LAMP
- B** TURN SIGNAL LAMP
- C** HIGH AND LOW BEAM LAMP
- D** DAYTIME RUNNING LIGHTS



REAR LAMP GROUP

- A** CLEARANCE LAMP
& TURN SIGNAL LAMP
- B** STOPLIGHT
- C** FOG LAMP
- D** REVERSING LAMP



◀ WINDSHIELD & WIPER

DOT

CCC

E4

155/65R13 VACUUM TIRE ▶

ALUMINUM ALLOY WHEEL HUB





◀ **RETRACTABLE ANTENNA**

DOOR HANDLE & LOCK ▶





◀ **REARVIEW MIRROR**



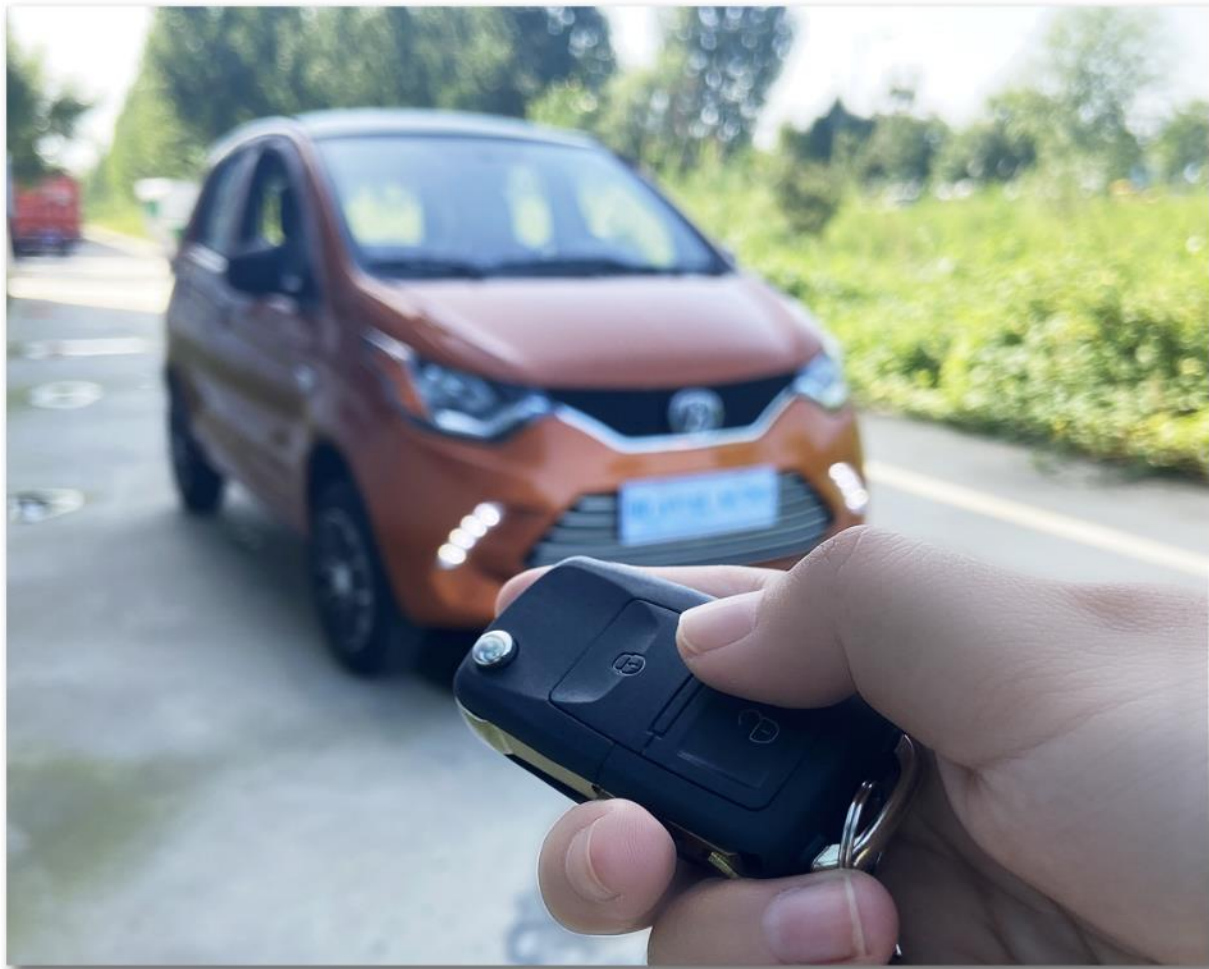
CHILD LOCK ▶



◀ **CAR CHARGING PORT**



CHARGING PORT SWITCH ▶



◀ **REMOTE DOOR LOCK**



REAR COMPARTMENT LOCK ▶



DRIVER'S DOOR



Window regulator switch

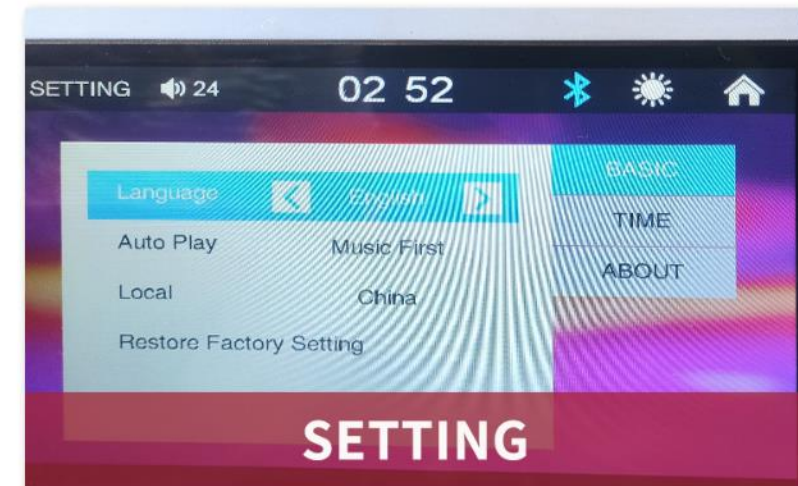


Interior central lock



RHD
MULTIFUNCTIONAL STEERING WHEEL EDITION

9-INCH TOUCH SCREEN





REAR VIEW CAMERA



BLUETOOTH-CALL



◀ **GLASS DEFROSTING**



AIR CONDITIONING OUTLET ▶





REAL TIME VOLTAGE

VEHICLE STATUS DISPLAY

VEHICLE STATUS

- GEAR DISPLAY
- SPEED
- TOTAL MILEAGE

ELECTRICITY METER

DISPLAY REMAINING POWER



SUNSHADING BOARD



READING LAMP



INTERIOR MIRROR

GEAR CONTROL

D - Forward / N - neutral gear / R - Reverse / E-Eco



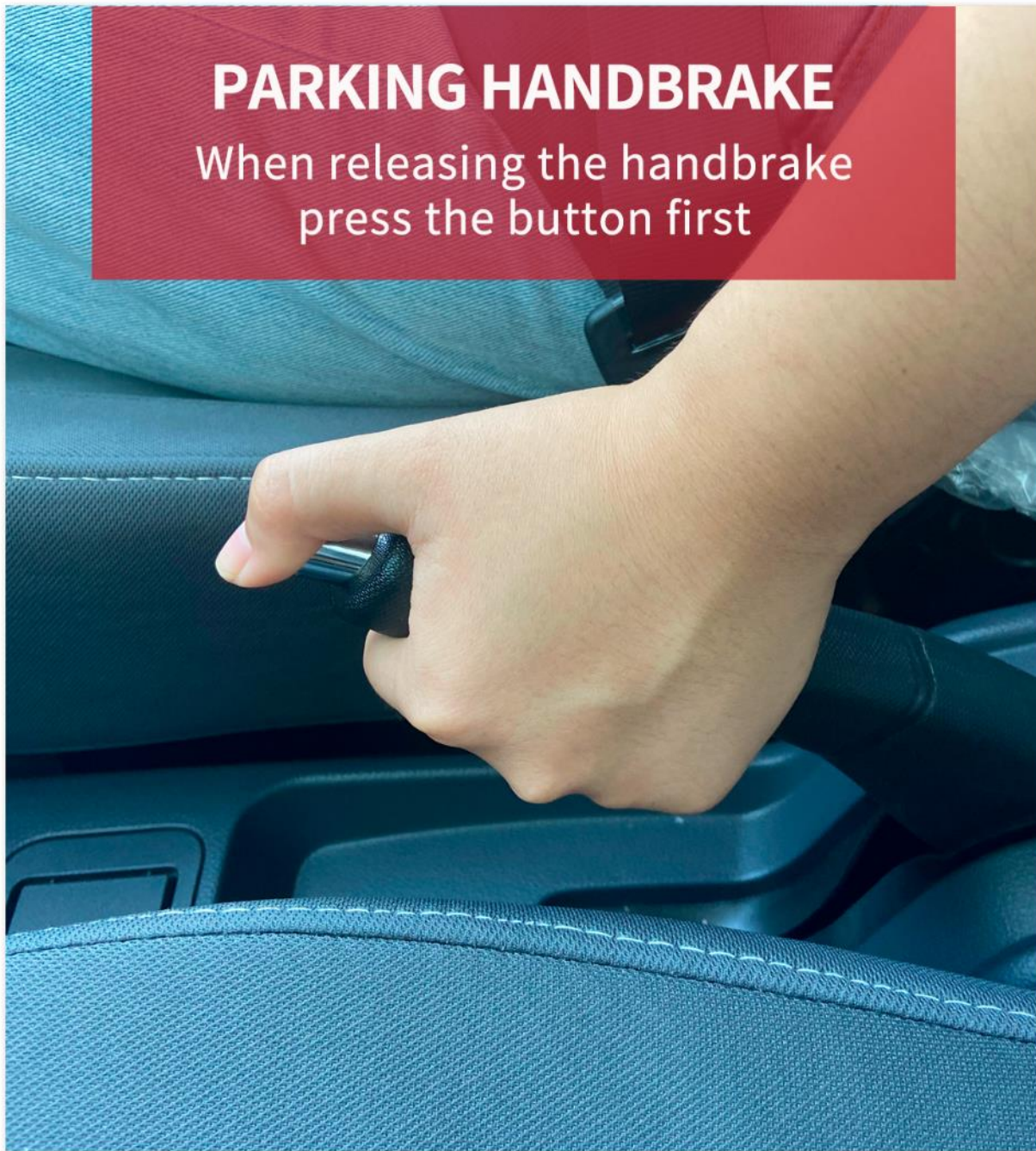
VEHICLE BRAKE PEDAL



ACCELERATOR PEDAL

PARKING HANDBRAKE

When releasing the handbrake
press the button first



FRONT SEAT BELT



REAR SEAT BELT



FRONT SEAT

FORE AND AFT ADJUSTMENT



FRONT SEAT



BACKREST ADJUSTMENT



◀ **FRONT ROW SPACE**
MODEL HEIGHT 173MM





REAR SEATING SPACE

MODEL HEIGHT 173MM





◀ MORE SPACE

Fold the rear seats for more storage



REAR COMPARTMENT ▶

Can accommodate 4 medium suitcases

M7

**COMFORTABLE
RHD·FH5120LM7**

**SIZE (L*W*H) : 3380*1550*1500 (mm)
WHEELBASE : 2260 (mm)**

Peak Power

10 KW

Peak Torque

108 N.m

Max. Speed

70 Km/h

Curb Weight

720 KG

Battery Capacity

8.64 KWH

Max. Range

148 Km

Charging Time

4-6 h

Tyre Size

155/65R13

Battery Type

Lithium battery (NCM)



Air conditioner

YES



Electric power steering

YES



Range extender

Optional



M7

UPGRADE
RHD·FH5160LM7

SIZE (L*W*H) : 3380*1550*1500 (mm)
WHEELBASE : 2260 (mm)

Peak Power

10 KW

Peak Torque

108 N.m

Max. Speed

70 Km/h

Curb Weight

738 KG

Battery Capacity

11.52 KWH

Max. Range

200 Km

Charging Time

4-6 h

Tyre Size

155/65R13

Battery Type

Lithium battery (NCM)



Air conditioner

YES



Electric power steering

YES



Range extender

Optional



M7

**ADVANCED
RHD·FH7240LM7**

**SIZE (L*W*H) : 3380*1550*1500 (mm)
WHEELBASE : 2260 (mm)**

Peak Power

15 KW

Peak Torque

132 N.m

Max. Speed

100 Km/h

Curb Weight

750 KG

Battery Capacity

17.28 KWH

Max. Range

300 Km

Charging Time

4-6 h

Tyre Size

155/65R13

Battery Type

Lithium battery (NCM)



Air conditioner

YES



Electric power steering

YES



Range extender

NO



M7

FLAGSHIP
RHD·FH7320LM7

SIZE (L*W*H) : 3380*1550*1500 (mm)
WHEELBASE : 2260 (mm)

Peak Power

15 KW

Peak Torque

132 N.m

Max. Speed

100 Km/h

Curb Weight

770 KG

Battery Capacity

23.04 KWH

Max. Range

400 Km

Charging Time

4-6 h

Tyre Size

155/65R14

Battery Type

Lithium battery (NCM)



Air conditioner

YES



Electric power steering

YES

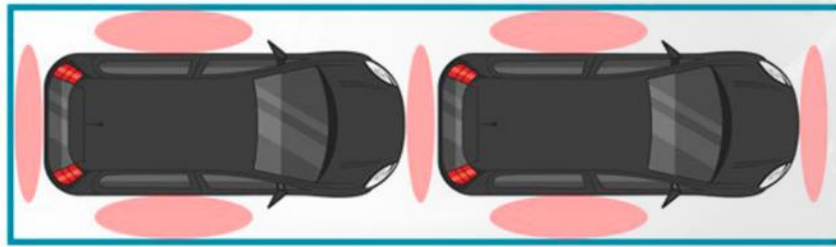


Range extender

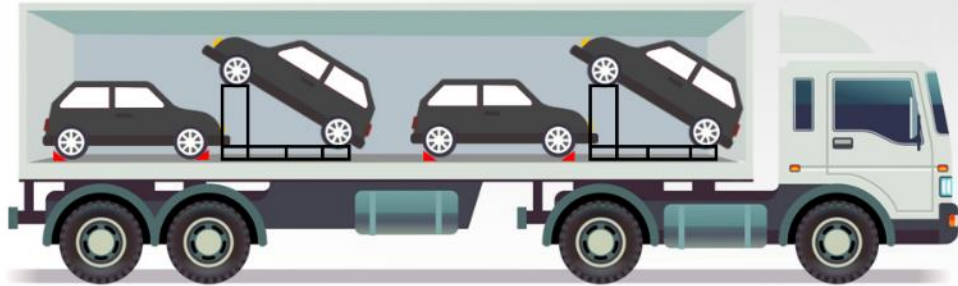
NO



PACKING AND SHIPPING



● Dunnage air bag



▲ Antiskid device

QUANTITY:
40Gp/HQ -4Unit

PACKAGING:
Steel Pallet, antiskid device

MODE OF TRANSPORTATION:
Train / Truck / Ship



THANKS!

WORK TOGETHER AND BENEFIT EACH OTHER

COPYRIGHT © 2021 BLAVAL AUTO